

COMPREHENSIVE ANNUAL FINANCIAL REPORT JUNE 30, 1984

SERS

**SCHOOL EMPLOYEES
RETIREMENT SYSTEM**

**SCHOOL EMPLOYEES RETIREMENT SYSTEM
OF OHIO**

45 NORTH FOURTH STREET
COLUMBUS, OHIO 43215

**COMPREHENSIVE ANNUAL
FINANCIAL REPORT**

For The
Year Ended June 30, 1984

THE SCHOOL EMPLOYEES RETIREMENT BOARD OF OHIO



MARY E. KASUNIC

President
Wickliffe City School District
Wickliffe, Ohio
Term expires June 30, 1985



ANTHONY J. CELEBREZZE

Attorney General
Ex Officio Member



ORRIS E. FIELDS

Vice President
Wilmington City School District
Wilmington, Ohio
Term expires June 30, 1987



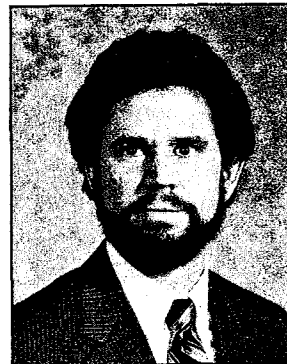
THOMAS E. FERGUSON

Auditor of State
Ex Officio Member



LOWELL B. DAVIS

Employee-Member
Euclid City School District
Euclid, Ohio
Term expires June 30, 1989



THOMAS R. ANDERSON

Executive Director



WILLIAM A. GUY

Employee-Member
Columbus City School District
Columbus, Ohio
Term expires June 30, 1988



AGNES F. O'KEEFE

Retiree-Member
Westerville, Ohio
Term expires June 30, 1988

ASSISTANT DIRECTORS

R. JACK COOPER
Investments

RICHARD C. REGAN
Retirement Services

DALE D. McINTYRE
Information Services

THOMAS R. SKIPTON
Office Services

STEPHEN J. PUSKAC
Membership-Accounting

RITA M. VOLPI
Planning / Human Resources

C. DOUGLAS WILSON
Data Processing

ORGANIZATIONAL CHART

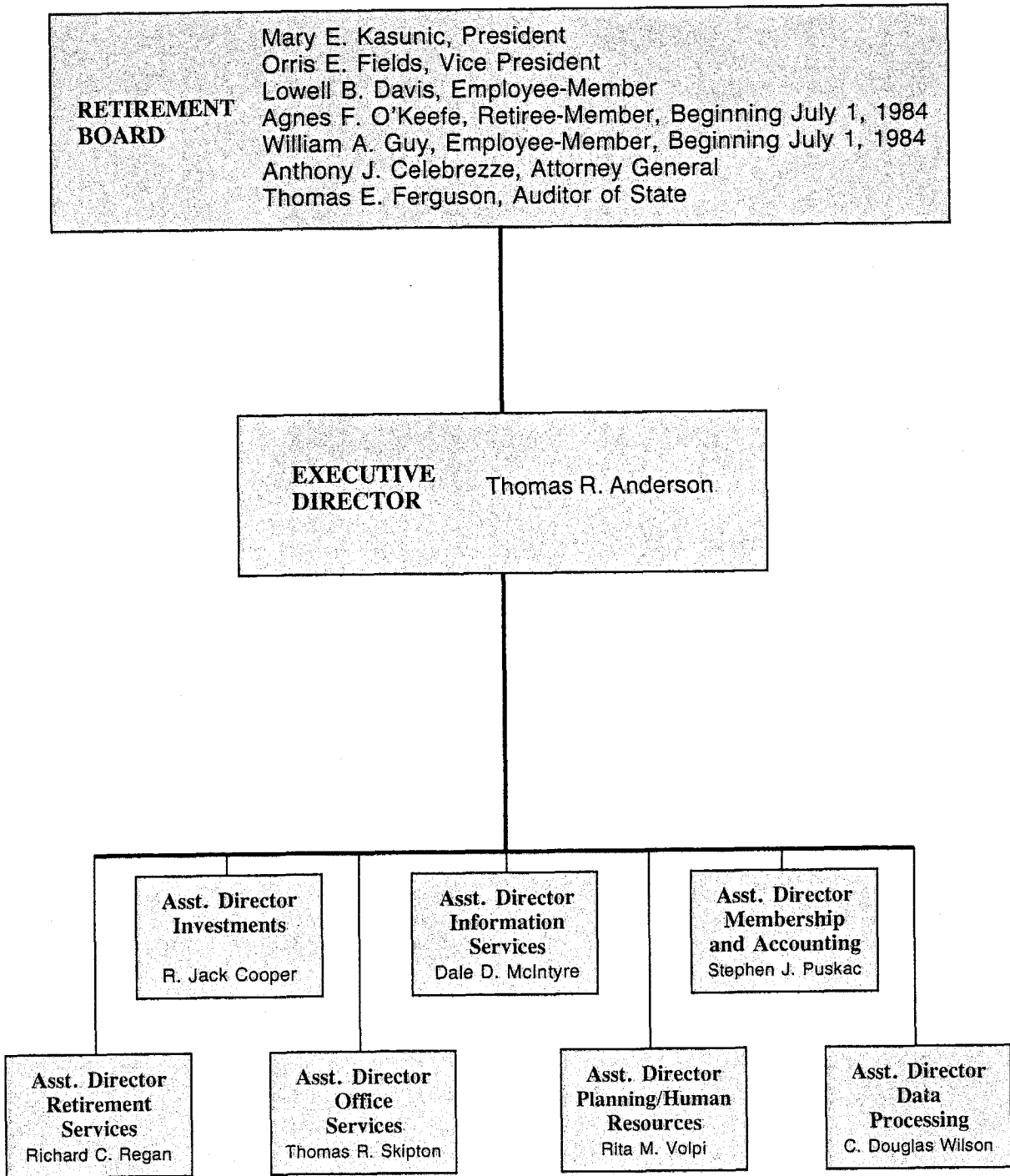


TABLE OF CONTENTS

	Pages
LETTER OF TRANSMITTAL	1-2
HIGHLIGHTS OF 1984	3
NUMBER OF PARTICIPATING EMPLOYERS AND EMPLOYEES	4
FINANCIAL STATEMENTS:	
Auditor's Opinion	6
Exhibits	
A Balance Sheet	8
B Statement of Revenue and Expense	9
C Statement of Changes in Funds	10-11
D Statement of Changes in Financial Position	12
Notes to Financial Statements	13-15
Schedules	
1 Cash Receipts and Disbursements	17
2 Administrative Expenses	18
Auditor of State's Opinion	19
ACTUARY LETTER AND REPORT	20-22
STATISTICAL TABLES:	
I Revenues By Source	24
II Expenses By Type	24
III Number of Participating Members	25
IV Number of Participating Employers	25
V Member — Employer Contribution Rates	25
VI Number of Refunds	25
VII Benefit Expenses By Type	26-27
VIII Number of Benefit Payments	26
IX Retirement Averages — Service	27
X Retirement Averages — Disability	27
XI New Benefit Payments — By Year — Service	28-29
XII New Benefit Payments — By Year — Survivor	30-31
XIII New Benefit Payments — By Year — Disability	32
INVESTMENTS:	
Report by Investment Manager	34
Schedules	
I Portfolio Summary	35
II Rates of Return	36
III Investment Activity	36
IV Quality of Stocks	37
V Diversification of Stocks	37
VI Dividend Growth from Stocks	37
VII Diversification of the Real Estate Investments	37
Exhibits	
1 Fixed Income Portfolio by Maturity	38
2 Fixed Income Portfolio by Interest Rates	38
3 Bond Portfolio Quality Ratings by Moody's	39
4 Distribution of 1984 Mortgage Portfolio	39
Investment Listing	40-48
Investment Policy	49-51
PLAN SUMMARY	53-56